





-7000



AA-7000F

AA-7000G

ISO/TS 6733-2015

ISO 14377-2014

EN 15505-2013

31266-2004

51766-2001

30178-96

01-19/47-11



UV-1900



UV-1280

1-50

UV-1900

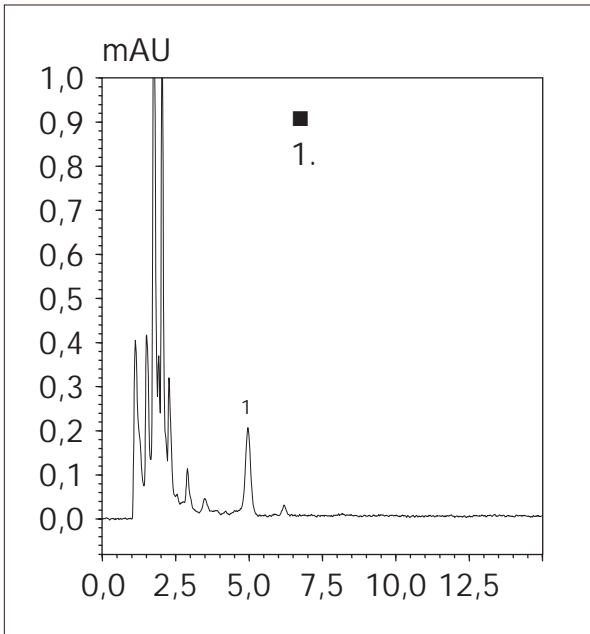
1-100

31584-2012

26935-86

26930-86

▶ LC-20 Prominence



LC-20 Prominence

33526-2015

9233-2-2011

2.

▶ Nexera X2/Nexera XR + LCMS-8060/8050/8045

34136-2017



Nexera X2 + LCMS-8060

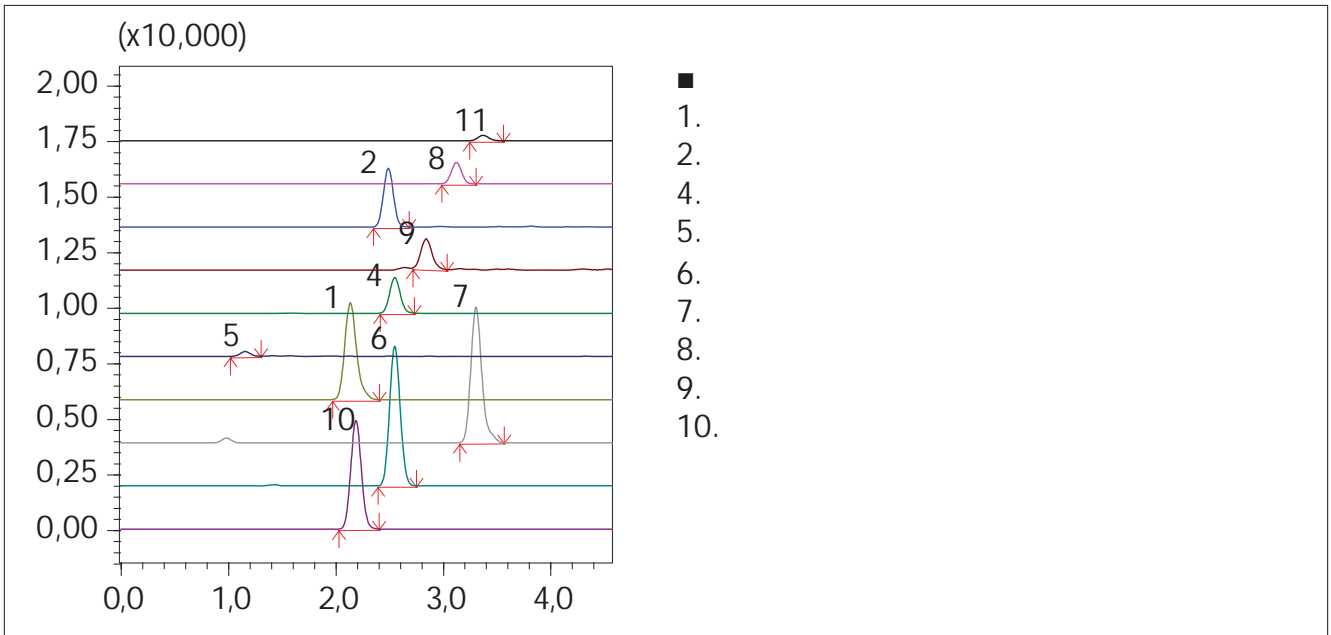
31694-2012

32797-2014

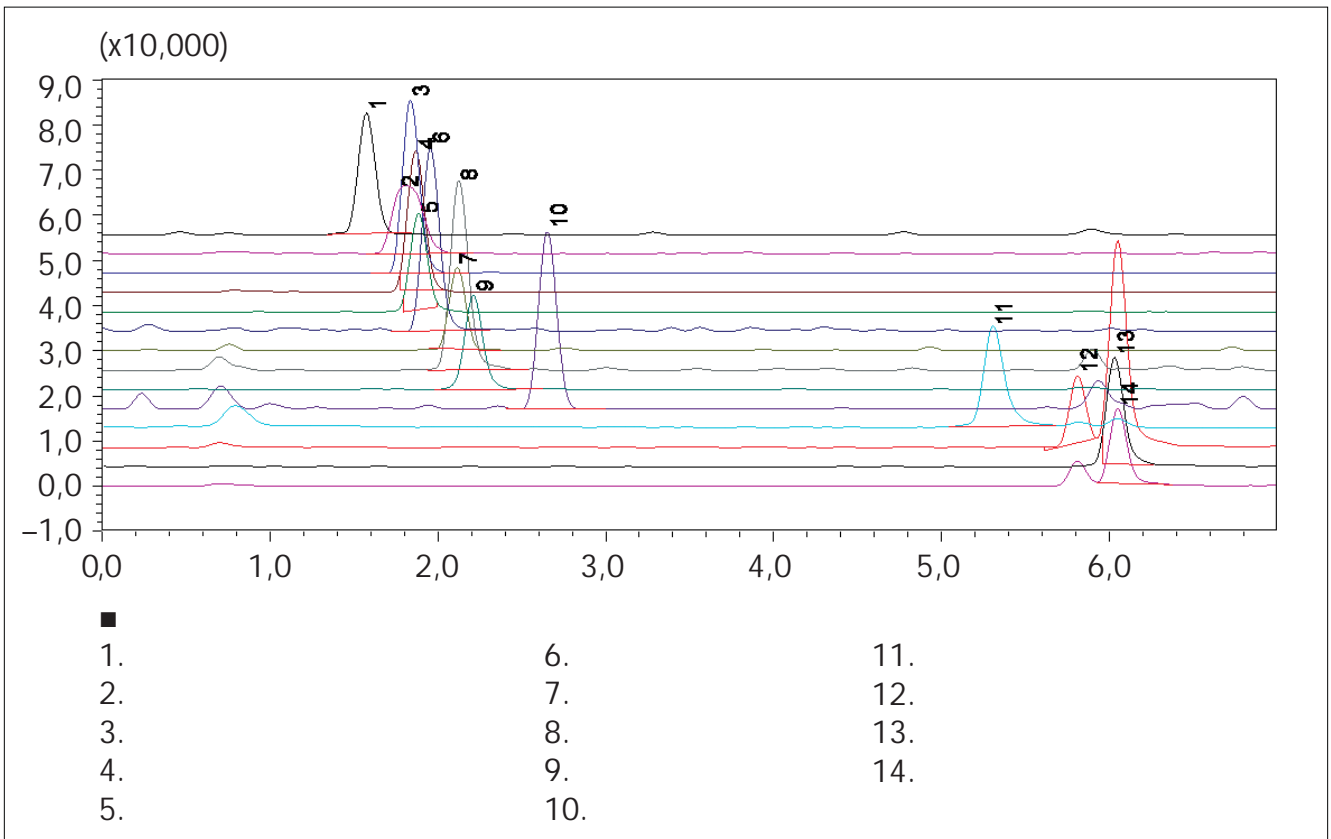
54904-2012

34137-2017

( , ):



1 ppb



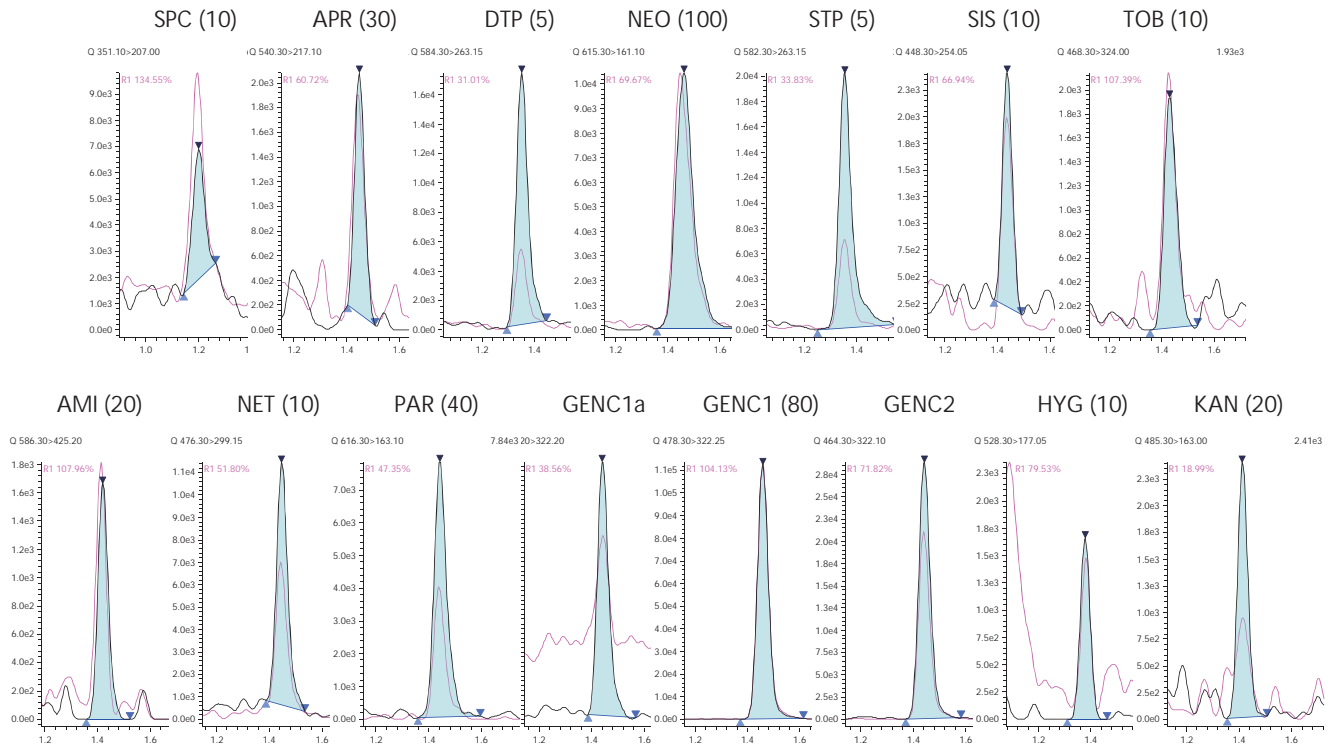
▶ Nexera X2/Nexera XR + LCMS-8060/8050/8045

32014-2012

( , ):

▶ Nexera X2 + LCMS-8060/8050

32798-2014



▶ Nexera X2/Nexera XR + LCMS-8060/8050/8045

54518-2011



Nexera X2 + LCMS-8045

▶ LC-20 Prominence  
c

▶ LC-2030 Plus/ LC-2030C Plus

:

4.1.1012-01

▶ Nexera X2/Nexera XR + LCMS-8060/8050/8045

:

32834-2014

▶ LC-20 Prominence c

▶ LC-2030 Plus/LC-2030C Plus  
c

:

EN 15835-2012

30711-2001

B1 M1.

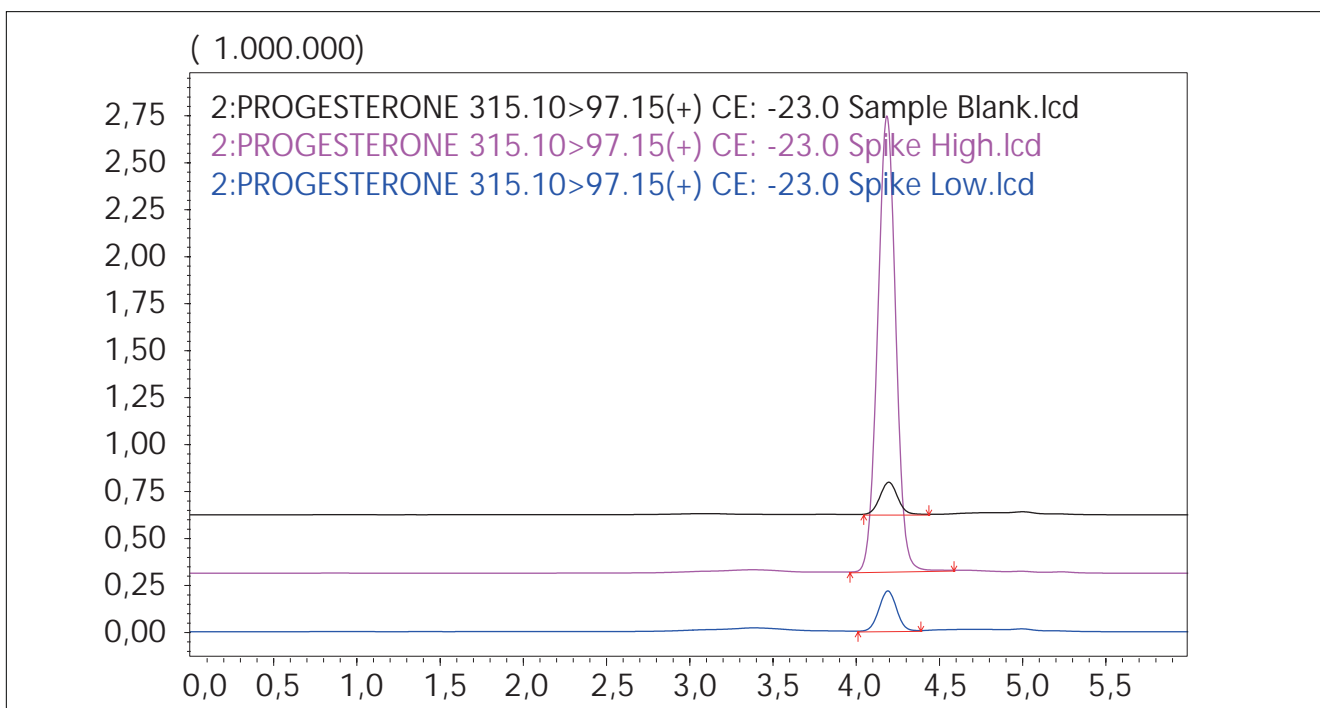
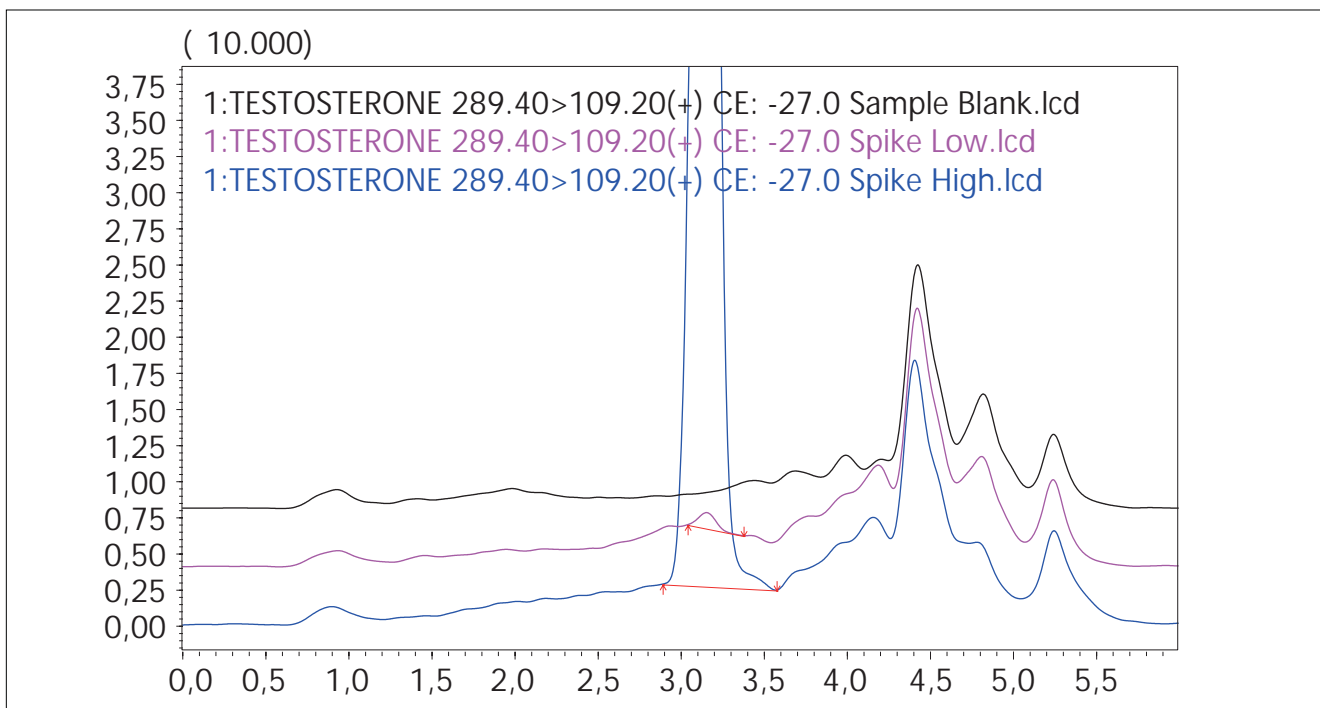
4.1.2.2204-07

4082-86

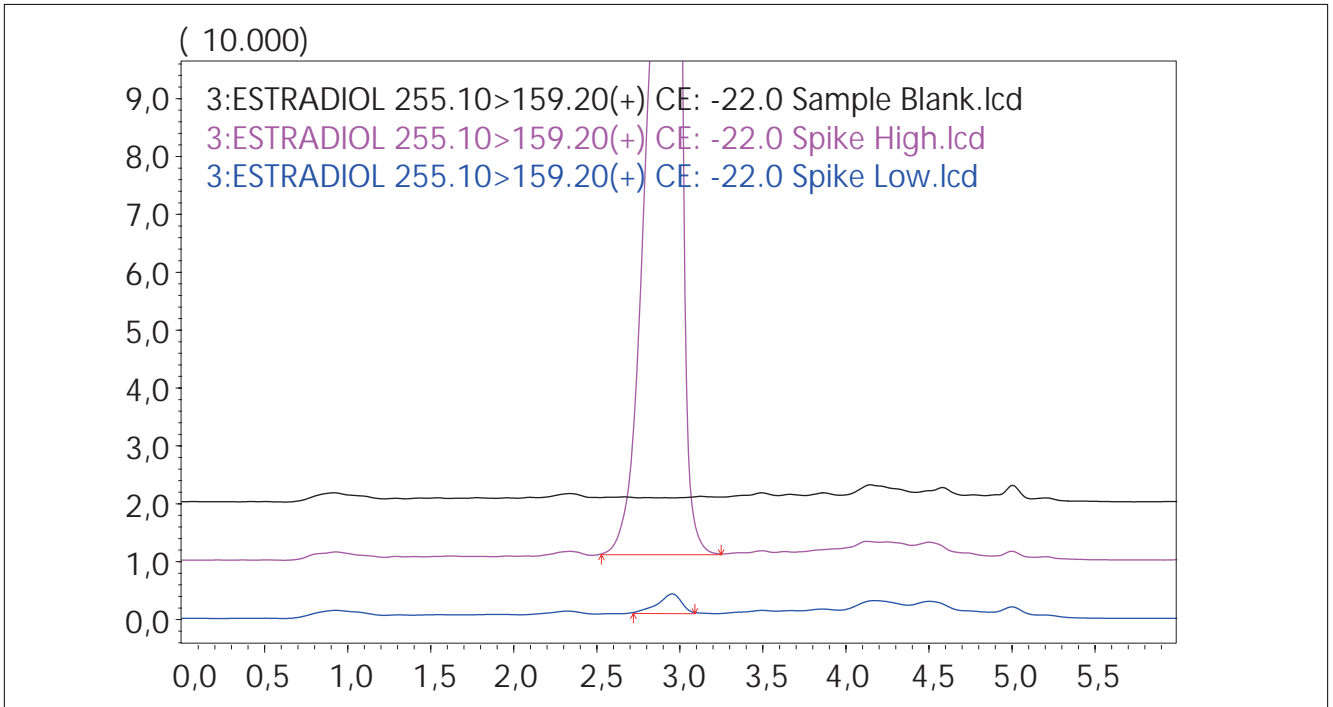


LC-2030 Plus

33482-2015







GCMS-QP2020

- ▶ 32015-2012
- ▶ LC-20 Prominence

32015-2012

Nexera X2/Nexera XR + LCMS-8060/8050/8045

- ▶ Nexera X2/Nexera XR + LCMS-8060/8050/8045

32881-2014



Nexera X2 + LCMS-8050

▶ Nexera X2/Nexera XR + LCMS-8060/8050/8045

33607-2015

33486-2015



Nexera X2 + LCMS-8060

▶ GCMS-QP2020

31982-2012

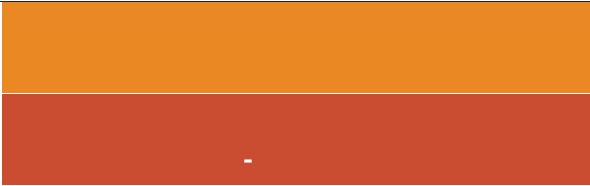


GCMS-QP2020

▶ Nexera X2/Nexera XR + LCMS-8060/8050/8045

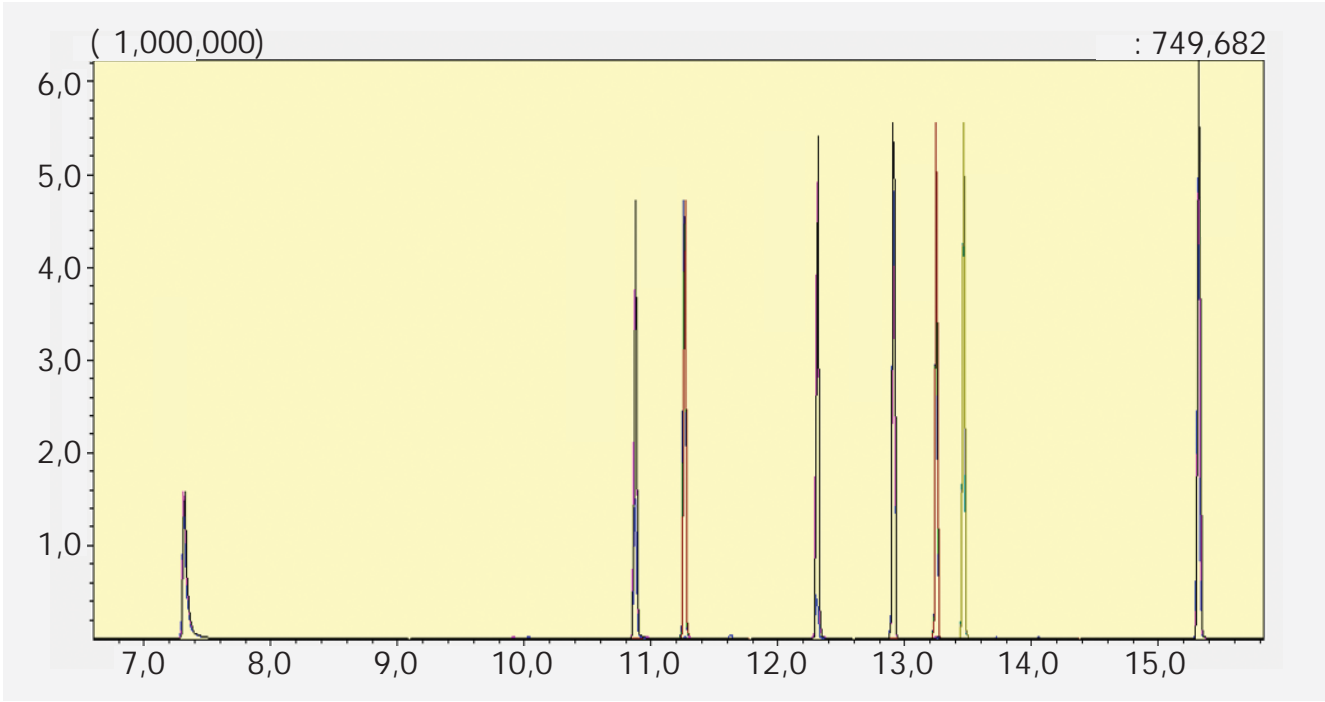
34139-2017

- ▶ GC-2030 GC-2014  
( )
- ▶ GC-2030 GC-2014  
( )
- ▶ GCMS-QP2020
- ▶ GCMS-TQ8040



GC-2030

:  
 23452-2015  
 ISO 8260:2008  
 ISO 3890-2012  
 ( )  
 4.1.1918-04  
 EN 1528-2014  
 ( )



MRM-10 / GCMS-TQ8040

( )

▶ LC-20 Prominence

c

▶ LC-2030C LT Plus

:

32258-2013

( )

31745-2012

51650-2000

( )



LC-2030 LT Plus

▶ LC-20 Prominence c

▶ LC-2030 Plus/ LC-2030C Plus

c

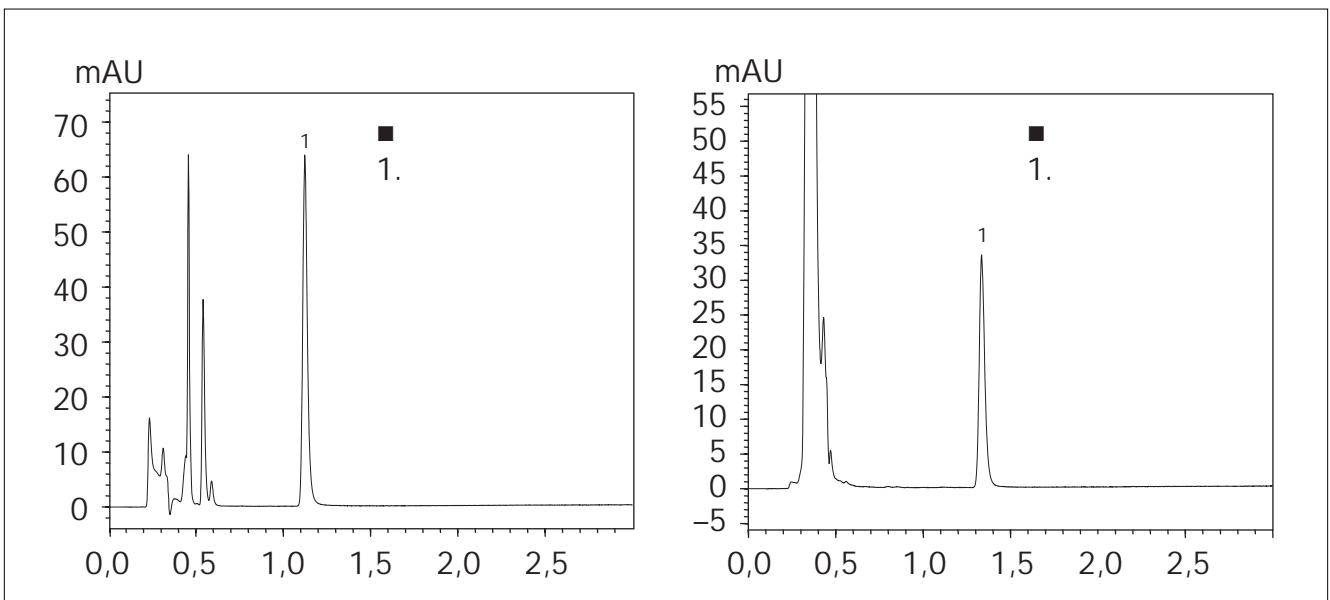
▶ LC-2030 3D Plus

:

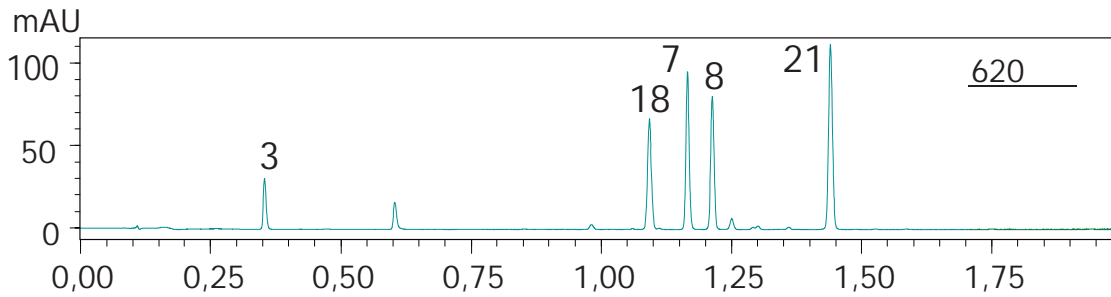
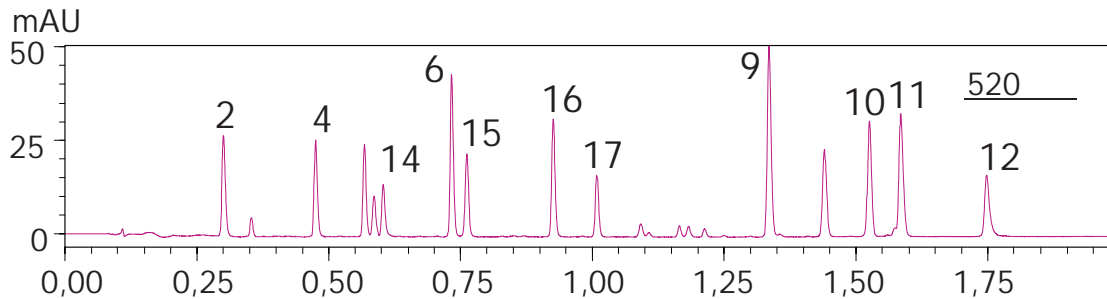
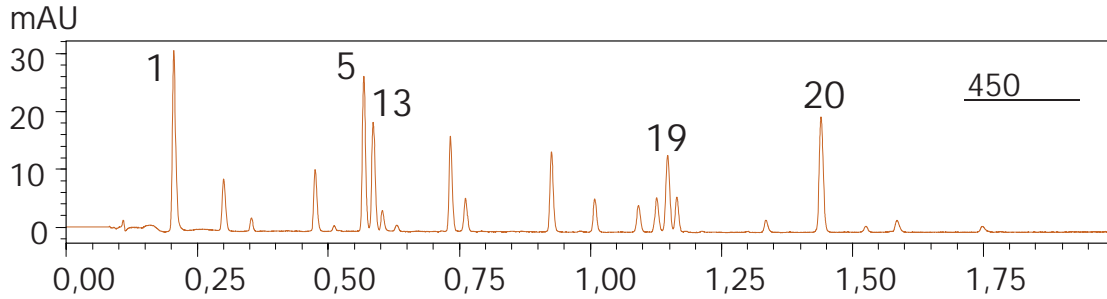
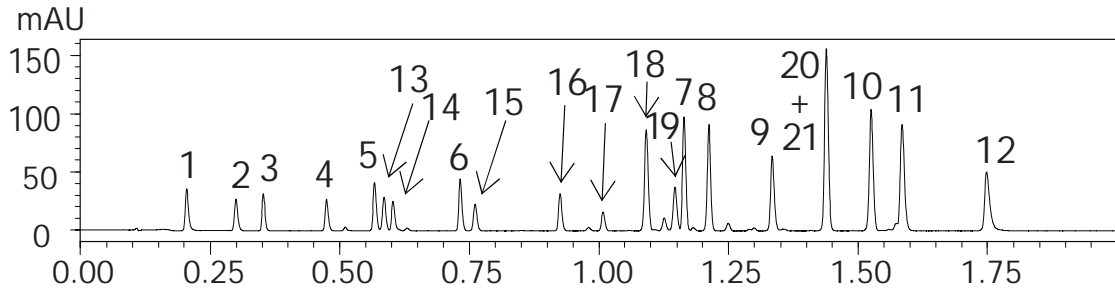
31504-2012

ISO 9231:2015

( : , )



( , , ):



1.	8.	15.	2 G	
2.	9.	16.		E
3.	10.	17.		
4.	11.	18.	S	
5.	12.	19.		S
6.	13.	20.	II	
7.	14.	21.		V
			PN	G

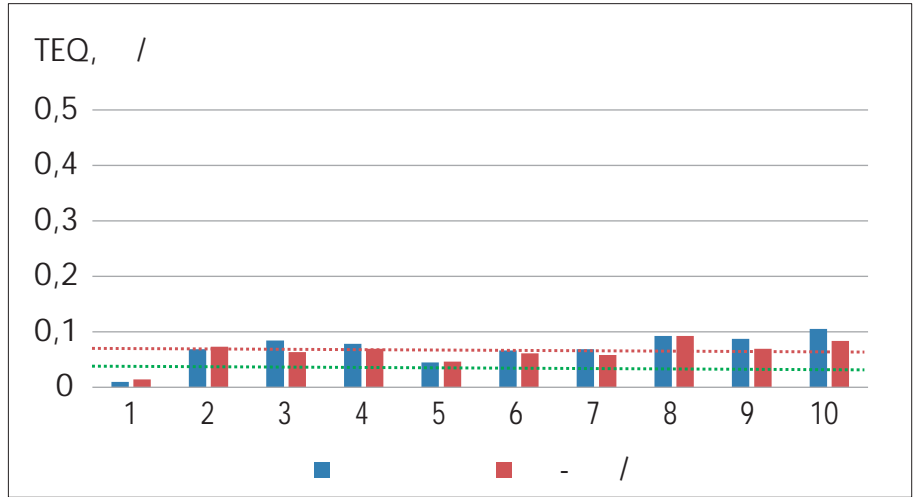
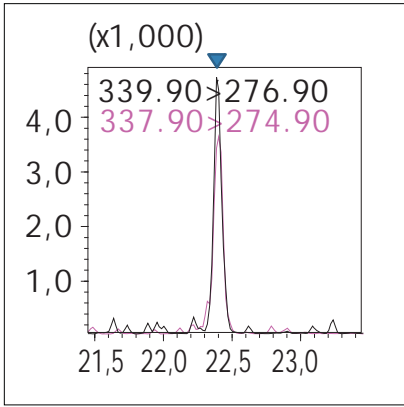
21



GC-2030 GC-2014



( , ):



2,3,4,7,8-  
(  
2,3,4,7,8-

0,066 / )



- ▶ UV-1280 1-50
- ▶ UV-1900 1-100

:

32939-2014



UV-1280



- ▶ UV-1280 1-50
- ▶ UV-1900 1-100

:

32827-2014

- ▶ LC-20 Prominence c -
- ▶ LC-2030 A/ LC-2030C Plus c
- ▶ LC-2030C 3D Plus -

: 4.1.2420-08

- ▶ Nexera X2/Nexera XR + LCMS-8060/8050/8045

ISO/TS 15495/IDF/RM 230-2012

(LC-MS/MS).



Nexera X2 + LCMS-8060

- ▶ UV-1280  
1-50
- ▶ UV-1900  
1-100

: 32257-2013



UV-1280

- ▶ UV-1280  
1-50
- ▶ UV-1900  
1-100

:

31716-2012 (ISO 8069:2005)



▶ RF-6000

:

52996-2008

1.



RF-6000

▶ LC-20 Prominence c -

▶ LC-20 Prominence ( )

▶ LC-2030 Plus

▶ LC-2030C 3D Plus c -

:

32916-2014

EN 14148-2015  
ISO 14892:2002

EN 14122-2013  
EN 14152-2013  
EN 12822-2012

EN 12821-2012

(D3)

1

B (1)

B (2)

E

D

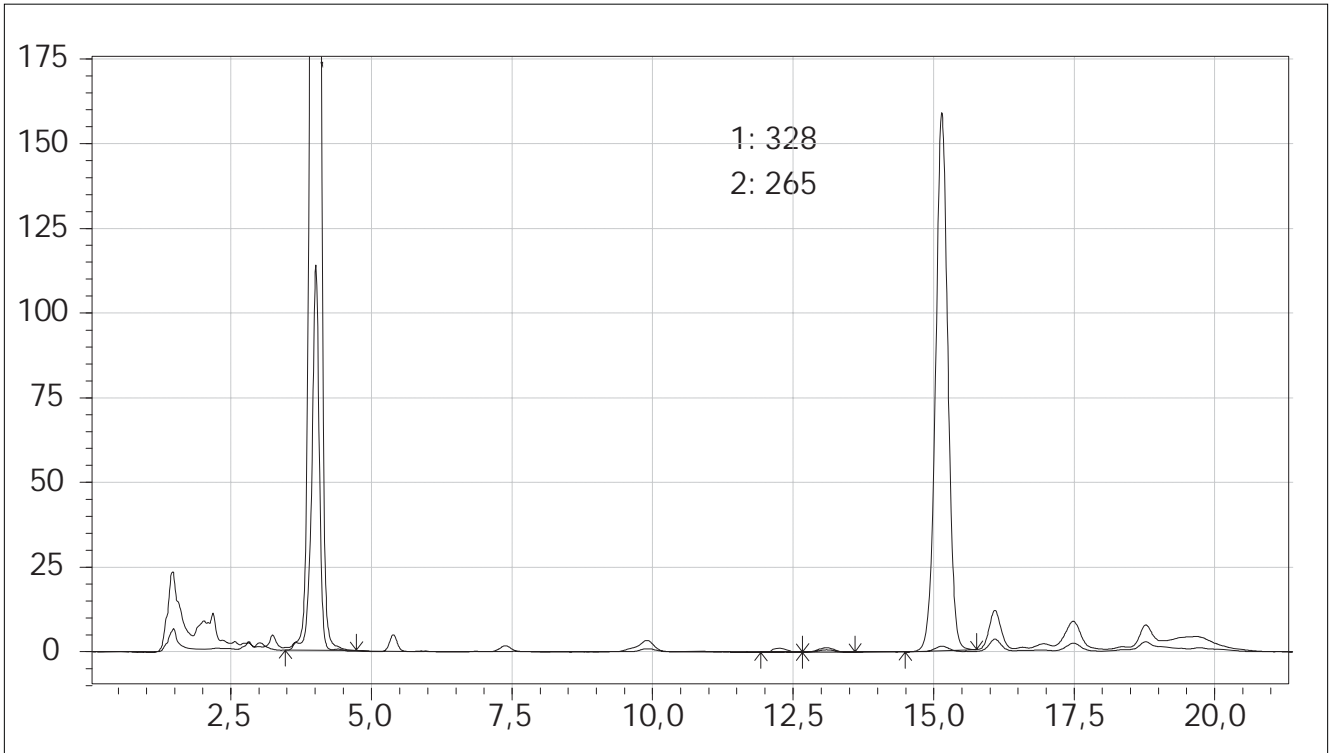
(D2).



LC-2030C Plus

D

( , ):



UV-1280

- ▶ UV-1280 1-50
- ▶ UV-1900 1-100

:

30627.1-98

( ).

30627.2-98

30627.3-98

( ).

30627.4-98

( ).



UV-1900

( ).

RF-6000

- ▶ RF-6000

:

30627.6-98


2 ( ).

30627.5-98

1 ( ).

▶	UV-1280		
	1-50		
▶	UV-1900		1-100
:			
	55282-2012		
	31980-2012		

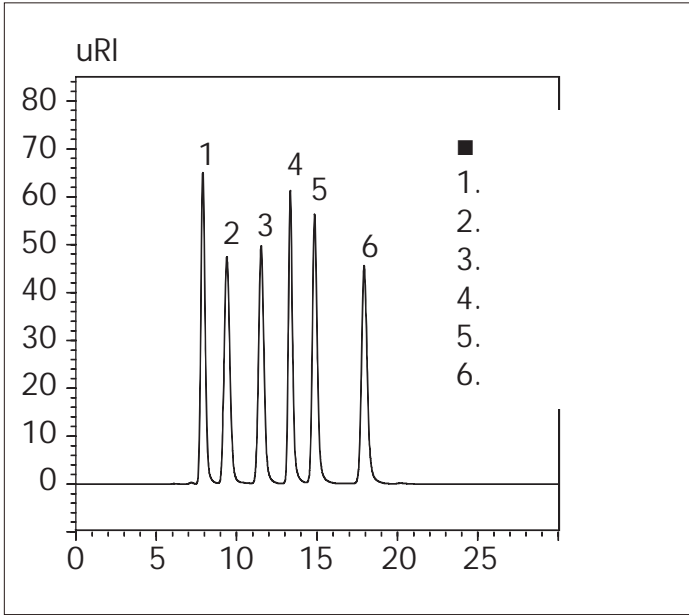
▶	UV-1280		
	1-50		
▶	UV-1900		1-100
:			
	25179-2014		



UV-1280

▶	UV-1280		
	1-50		
▶	UV-1900		1-100
:			
	31633-2012		

▶	UV-1280		
	1-50		
▶	UV-1900		1-100
:			
	34304-2017		
	51939-2002		



▶ LC-20 Prominence  
c

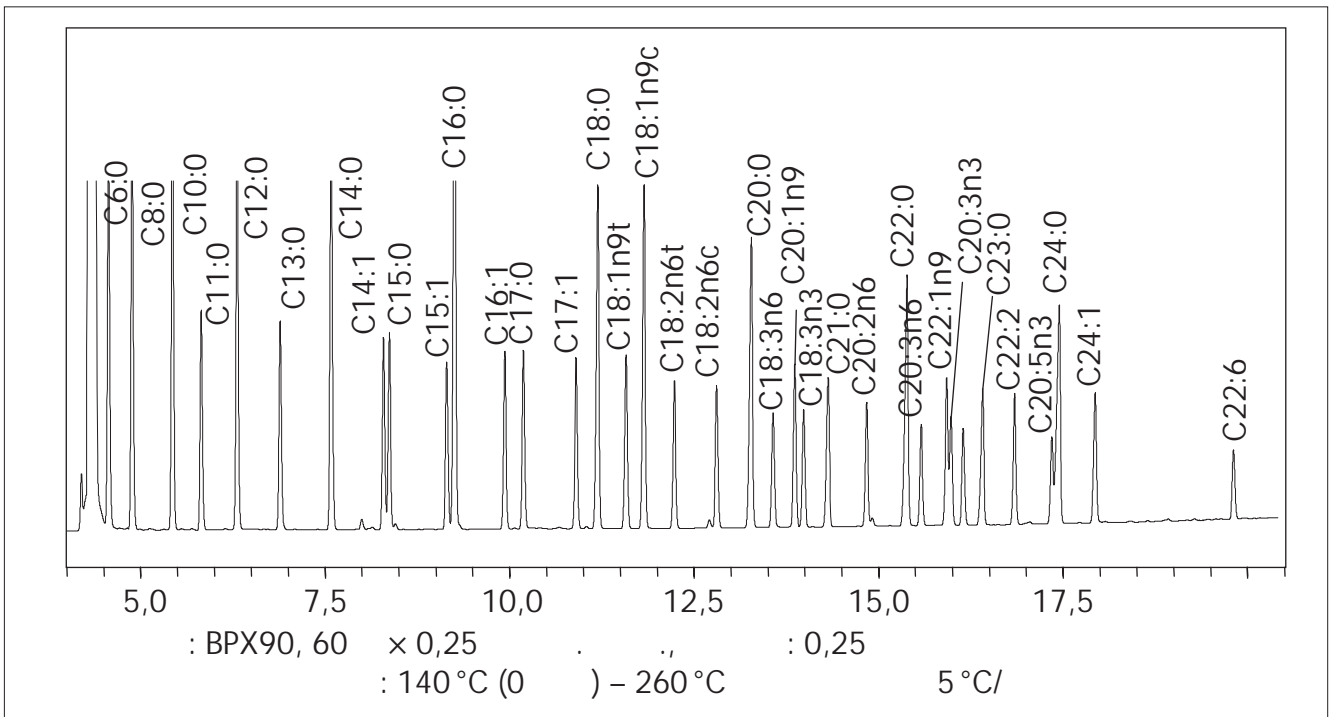
:  
54760-2011

ISO 22662-2011

( )



GC-2030 GC-2014



( ):

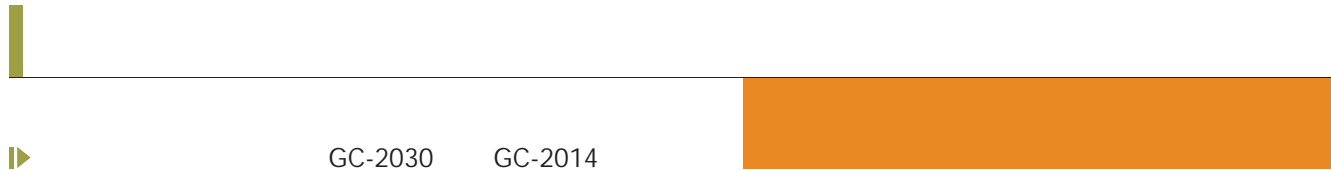
56416-2015

-3 -6

32915-2014

31663-2012

15304-2007

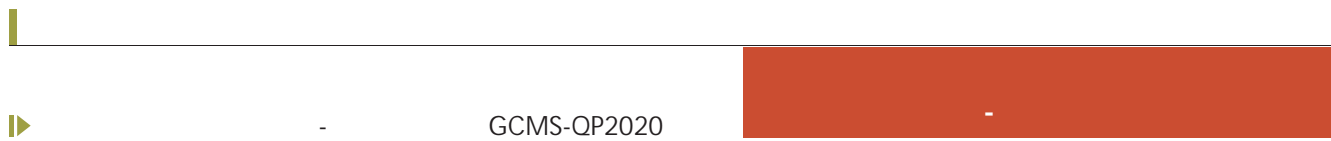


▶ GC-2030 GC-2014

31979-2012



GC-2014

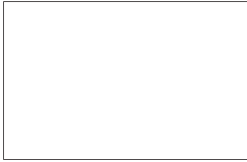


▶ GCMS-QP2020

33490-2015



GCMS-QP2020



		.....	3
		.....	3
		.....	15
		.....	15
		.....	16
		.....	16
		.....	18
		.....	19
		.....	19
		.....	19
		.....	19
		.....	4
		.....	7
		.....	7
	( )	.....	12
	,	.....	12-13
		.....	16
		.....	17-18
		.....	20
		.....	4-5
		.....	5
		.....	6
		.....	6
		.....	7
		.....	8-9
		.....	9
		.....	10
		.....	10
		.....	16
		.....	11
		.....	13
		.....	14
		.....	20-21
		.....	21
		.....	9
		.....	10
		.....	11
		.....	14-15
		.....	21
		.....	17
		.....	18